



Boston International Live Endoscopy Course 2009

The Seaport Hotel | World Trade Center | Boston, Massachusetts
October 7 – October 9, 2009

With simultaneous live satellite transmission of over 60 cases from Beth Israel Deaconess Medical Center, Rhode Island Hospital, Boston Medical Center, Brigham and Women's Hospital, Massachusetts General Hospital and additional live transmission from Dublin, Ireland. Transmission of this year's BILEC will be live broadcast to Mexico, Singapore and Greece.

Plus
Hands-On
Workshops:

EUS FOR BEGINNER AND INTERMEDIATE USERS

ADVANCED FELLOWS' WORKSHOP

UPDATE ON NATURAL ORIFICE SURGERY TECHNOLOGY (HUNT)

Course Directors

Ram Chuttani, MD
Beth Israel Deaconess Medical Center

Douglas Pleskow, MD
Beth Israel Deaconess Medical Center

Paul Akerman, MD
Rhode Island Hospital

David Lichtenstein, MD
Boston Medical Center

David Carr-Locke, MD
Brigham and Women's Hospital

William Brugge, MD
Massachusetts General Hospital

John Saltzman, MD
Brigham and Women's Hospital

Steven Brandwein, MD
Danbury Hospital

Ricardo Barinaga, MD
Hospital Angeles del Pedregal, Mexico City

Rajnakova Andrea, MD
National University Hospital, Singapore

Prof Ho Khok Yu, MD
National University Hospital, Singapore

Diarmuid O'Donoghue, MD
St. Vincent's Hospital Dublin, Ireland

Hugh Mulcahy, MD
St. Vincent's Hospital Dublin, Ireland

Gerasimos Stefanidis, MD
Athens Naval Hospital Athens, Greece

ASGE has approved this course for
AMA PRA Category 1 Credit™



Beth Israel Deaconess Medical Center



Rhode Island Hospital
A Lifespan Partner



BRIGHAM AND WOMEN'S HOSPITAL



MASSACHUSETTS GENERAL HOSPITAL

Boston International Live Endoscopy Course 2009

A unique live endoscopy course, designed for gastroenterologists, surgical endoscopists, gastroenterology fellows, and GI nurses from October 7–October 9, 2009 with simultaneous live satellite transmissions featuring over 60 cases performed by an outstanding national and international faculty. Cases will be transmitted live from Beth Israel Deaconess Medical Center, Rhode Island Hospital, Boston Medical Center, Massachusetts General Hospital, and Brigham and Women's Hospital. Additional international live transmission will be from Dublin, Ireland. State-of-the-art lectures will cover techniques and advances in GI Endoscopy.



At the conclusion of this conference the participant should be able to determine indications and contraindications for advanced endoscopic procedures, describe the role of endoscopy in the management of gastrointestinal disease, and assess new technology in digestive disease management.

This year we are offering optional Hands-on Endoscopy workshops: EUS for Beginner and Intermediate Users, Hand's-on Update on Natural Orifice Surgery Technology (HUNT) and Advanced Fellows' Workshop. You can sign up by going to www.bilec.com.

Faculty

Invited National Faculty

Douglas Adler, MD
Salt Lake City, UT
Girish Anand, MD
Philadelphia, PA
Yousif A-Rahim, MD
Honolulu, HI
Riad Azar, MD
St. Louis, MO
Subhas Banerjee, MD
Stanford, CA
Steven Edmundowicz, MD
St. Louis, MO
David Fefferman, MD
Stoneham, MA
Andres Gelrud, MD
Pittsburgh, PA
Eric Goldberg, MD
Baltimore, MD
Douglas Janowski, MD
Boston, MA
Rabi Kundu, MD
Fresno, CA
Suk ho Lee, MD
Boston, MA

Roger Mitty, MD
Brighton, MA
Shyam Thakkar, MD
Pittsburgh, PA
Jaroslav Zivny, MD
Worcester, MA

Invited International Faculty

Andres Cardenas, MD
Barcelona, Spain
James Ellsmere, MD
Halifax, Canada
Thomas Kelleher, MD
Dublin, Ireland
Claudio Navarette, MD
Santiago, Chile
Paulo Sakai, MD
San Paulo, Brazil

Beth Israel Deaconess Medical Center Faculty

Z. Myron Falchuk, MD
Kai Matthes, MD
Alan Moss, MD
Mandeep Sawhney, MD

Rhode Island Hospital Faculty

William Chen, MD
Fadlallah Habr, MD
Harlan Rich, MD
Nabil Toubia, MD

Boston Medical Center Faculty

Christopher Huang, MD
Brian Jacobson, MD
Marcos Pedrosa, MD

Brigham and Women's Hospital Faculty

Linda Lee, MD
Christopher Thompson, MD
Anne C. Travis, MD

Massachusetts General Hospital

Brenna Bounds, MD
David Forcione, MD
Peter Kelsey, MD

In accordance with policy, presenters have indicated if they have a conflict of interest and if so, it has been resolved.

Sponsorship info: This conference was made possible through educational grants provided by our supporters.

Production and live transmission provided by VideoLink.



VIDEO LINK
when your image is on the line.

**Thursday
October 8**

Boston International Live Endoscopy Course

6:30–7:00a	Registration and Breakfast
7:00–7:15	Program Introduction: Ram Chuttani, MD
7:15–8:30	State-of-the-Art Lectures <i>What's new...in Imaging</i> <i>What's new...in ERCP</i> <i>What's new...in Barrett's Ablation</i> <i>What's new...in Endoscopy Unit Management</i> <i>What's new...in Sedation</i>
8:30–10:00	Live Endoscopic Procedures from Beth Israel Deaconess Medical Center, Brigham and Women's Hospital and St. Vincent's Hospital, Ireland
10:00–10:30	Coffee Break and Exhibits
10:30–12:00p	Live Endoscopic Procedures from Beth Israel Deaconess Medical Center and Brigham and Women's Hospital
12:00–1:30	Lunch and Exhibits
1:30–3:00	Live Endoscopic Procedures from Beth Israel Deaconess Medical Center and Brigham and Women's Hospital
3:00–3:30	Coffee Break and Exhibits
3:30–5:30	Live Endoscopic Procedures from Beth Israel Deaconess Medical Center and Brigham and Women's Hospital
5:30–7:00	Course Reception in Exhibit Area

Credits: 7.5

**Friday
October 9**

Boston International Live Endoscopy Course

6:30–7:00a	Registration and Breakfast
7:00–8:30	State-of-the-Art Lectures <i>What's new...in Pseudocyst Management</i> <i>What's new...in Small Bowel Endoscopy</i> <i>What's new...in Therapy of Obesity</i> <i>What's new...in Teamwork in Endoscopy</i> <i>What's new...in Polyp Management</i>
8:30–10:00	Live Endoscopic Procedures from Rhode Island Hospital, Boston Medical Center and Massachusetts General Hospital
10:00–10:30	Coffee Break and Exhibits
10:30–12:00p	Live Endoscopic Procedures from Rhode Island Hospital, Boston Medical Center and Massachusetts General Hospital
12:00–1:30	Lunch and Exhibits
1:30–3:00	Live Endoscopic Procedures from Rhode Island Hospital, Boston Medical Center and Massachusetts General Hospital
3:00–3:30	Coffee Break and Exhibits
3:30–5:30	Live Endoscopic Procedures from Rhode Island Hospital, Boston Medical Center and Massachusetts General Hospital

Credits: 7.5

Advanced Fellows' Workshop

Wednesday
October 7

World Trade Center | Seaport Hotel
Boston, Massachusetts

Objectives: This workshop is intended for 3rd and 4th year Endoscopy fellows. At the conclusion of the workshop, the participant should be able to discuss indications for various techniques, perform advanced procedures in hands-on stations, and identify complications associated with procedures.

Workshop Director: Douglas Pleskow, MD

GROUP 1

7:45a	Welcome
8:00	Cannulation
8:30	Sphincterotomy
9:00	Management of Stone Disease
9:30	Management of Pancreatic Disease
10:15	Break
10:30	Management of Benign and Malignant Strictures
11:00	Complications of ERCP
11:30	Advances in Endoscopy
12:00 – 1:00p	Lunch
1:00 – 5:00	Participation in (10) Hands-On Stations

GROUP 2

7:45a	Welcome
8:00 – 12:00p	Participation in (10) Hands-On Stations
12:00 – 1:00	Lunch
1:00	Cannulation
1:30	Sphincterotomy
2:00	Management of Stone Disease
2:30	Management of Pancreatic Disease
3:15	Break
3:30	Management of Benign and Malignant Strictures
4:00	Complications of ERCP
4:30	Advances in Endoscopy

Online registration: Go to www.bilec.com to register.

Register early, space is limited.

Fee: \$100

NOTE: If you attend the hands-on workshop your main course fee will be waived.

EUS for Beginner and Intermediate Users Workshop

Wednesday
October 7

Beth Israel Deaconess Medical Center
Boston, Massachusetts

Objectives: This workshop is intended for gastroenterology fellows, gastroenterologists, and surgical endoscopists at beginner and intermediate EUS levels. At the conclusion of the workshop, the participant should be able to discuss indications for various EUS techniques, perform EUS procedures in the Simulations lab, and identify complications associated with EUS procedures.

NOTE: The hands-on portion will focus on imaging intra-abdominal organs, imaging the gastrointestinal wall and techniques of fine needle aspiration.

Workshop Director: Mandeep Sawhney, MD

7:30-8:00a	Breakfast and Introduction
8:00	Concepts and principles of ultrasound
8:30	Imaging using the radial echoendoscope and mini-probes
9:00	Imaging using the linear echoendoscope
9:30	FNA: Techniques, outcomes and complications
10:00	Break
10:15	EBUS: What gastroenterologists can learn
10:45	EUS for staging luminal malignancies
11:15	EUS of pancreas and bile ducts
11:45	Discussion and Questions
12:00 – 1:00p	Lunch
1:00 – 4:00	Hands-On Simulation Lab
	1) imaging using linear echoendoscope, radial echoendoscope and ultrasound probes;
	2) performing EUS guided fine needle aspiration and injection.
	credits: 7

Online registration: Go to www.bilec.com to register.

Register early, space is limited.

Fee: Lectures only—\$75

Lectures and hands-on—\$200

NOTE: If you attend the hands-on workshop your main course fee will be waived.

Location: Beth Israel Deaconess Medical Center
Shapiro Simulation and Skills Center
Shapiro Building G-20
330 Brookline Ave.
Boston, MA 02215

Contact: Alana Sacks
phone: (617) 667-4046
email: asacks@bidmc.harvard.edu

Information: CME credits will be available through ASGE.

Hands-on Update on Natural Orifice Surgery Technology (HUNT)

Wednesday
October 7

World Trade Center | Seaport Hotel
Boston, Massachusetts

Course Director: Christopher Thompson, MD

Course Co-Directors: David Rattner, MD and Kai Matthes, MD

Summary: This Harvard CME-accredited course is intended for GI endoscopists and surgeons with advanced laparoscopic and endoscopic skills interested in NOTES, consists of one half day of lectures, encompassing Endoluminal Primary Obesity, Endoluminal GERD, EMR/FTR, and new Natural Orifice Transluminal Endoscopic Surgery (NOTES) Technologies and Techniques, followed by a half day, hands-on workshop using the EASIE-R simulators to demonstrate therapeutic endoluminal procedures and NOTES organ resections.

7:00a	Registration and Continental Breakfast
7:30	Welcoming Remarks
7:45	Research Animal vs. Human Anatomy
8:15	NOTES Human Experience in the United States
8:45	Endoscopic Primary Obesity Procedures
9:15	Endoscopic GERD Therapy
9:45	EMR and FTR
10:15	Intellectual Property and Navigating University versus Start-up Company Strategies
10:45	Break
11:00	Video Forum (5 NOTES Videos presented by past and present Endoscopy and Surgical fellows)
12:00 – 1:00p	Lunch
1:00 – 4:00p	Hands-on Lab using the EASIE-R Simulator: Highlighting trans-colonic/trans-vaginal cholecystectomy, trans-gastric tubal ligation, endoscopic obesity procedures
	credits: 7

Registration: Please go to <http://cme.hms.harvard.edu/> to register. Course # 02914133

Tuition: Physicians: Didactic and Hands-on **\$350**
Physicians: Didactic Only **\$200**
HMS Surgical Resident, GI Fellow: Hands-on **\$150**



CME and CEU Credit

Physicians: This activity has been planned and implemented in accordance with the Essential Areas and policies of the Accreditation Council for Continuing Medical Education through the joint sponsorship of the American Society for Gastrointestinal Endoscopy (ASGE) and Boston International Live Endoscopy Course. The ASGE is accredited by the ACCME to provide continuing medical education for physicians.

ASGE designates the main BILEC course for a maximum of 15 *AMA PRA Category 1 Credits™*. ASGE designates the EUS workshop for a maximum of 7 *AMA PRA Category 1 Credits™*. Physicians should only claim credit commensurate with the extent of their participation in the activity.

Nurses: "This educational activity has been submitted to the Society of Gastroenterology Nurses and Associates, Inc. for approval. The Society of Gastroenterology Nurses and Associates, Inc. is accredited as an approver of continuing nursing education by the American Nurses Credentialing Center's Commission on Accreditation."

ADA Statement: ASGE and Boston International Live Endoscopy Course fully intends to comply with the legal requirements of the Americans with Disabilities Act. If any participant of this conference is in need of accommodation, please do not hesitate to contact **Alana Sacks** at **(617) 667-4046**.

The contents of some CME activities may contain discussions of non-approved or off-label uses of some of the agents mentioned. Please consult the prescribing information for full disclosure of approved uses.

Boston International Live Endoscopy Course 2009

Registration Information

Online registration: Go to www.bilec.com for main course, fellows and EUS workshops
Go to <http://cme.hms.harvard.edu> for HUNT course

Registration fees:

Main Course (Thursday and Friday)
\$400 Gastroenterologists and Surgeons
\$150 Residents, fellows and nurses
\$300 Industry representatives

Advanced Fellows' Workshop (Wednesday)
\$100 Advanced Fellows

NOTE: If you attend the Fellows' Workshop your main course fee will be waived.

EUS for Beginner and Intermediate Users Workshop (Wednesday)

\$75 Lectures only
\$200 Lectures and hands-on

NOTE: If you attend the EUS Hands-on Workshop your main course fee will be waived.

Course Payment:

- Payment is accepted by credit card on-line
or
- Fill out the registration form below and mail along with payment by cash or check made payable to "BIDDM Foundation" to:
Alana Sacks – GI
Beth Israel Deaconess Medical Center
330 Brookline Ave., ST-402
Boston, MA 02215
- For additional information, call **(617) 667-4046** or email asacks@bidmc.harvard.edu

Hotel Information

Seaport Hotel/WTC
200 Seaport Boulevard
Boston, MA 02210

To make a reservation call:
877-SEAPORT or (877) 385-4514

NOTE: All activities will be held in the World Trade Center.

Contact Alana Sacks with any questions or issues.
Call **(617) 667-4046** or email asacks@bidmc.harvard.edu.

A limited number of hotel rooms are reserved at a discounted rate. To receive the special rate, reference "**Boston International Live Endoscopy Course**" when booking your room. The special rate is \$244 per night.

Parking: Hotel parking is NOT discounted. There are outdoor parking lots and meters within walking distance.

Travel: For assistance with your travel needs feel free to contact: Stow Travel Center, Inc.
Phone: 978-897-2810
E-mail: stowtravel@aol.com

Registration Form

Name _____
Institutional affiliation/Company _____
Address _____
City _____ State _____ Zip _____
Phone _____ Fax _____
E-mail _____

Main Course

- \$400**, Gastroenterologists and Surgeons
 \$150, Residents and Fellows
 \$150, Nurses
 \$300, Industry representatives

Fellows' workshop

- \$100**, Advanced Fellows
(includes main course)

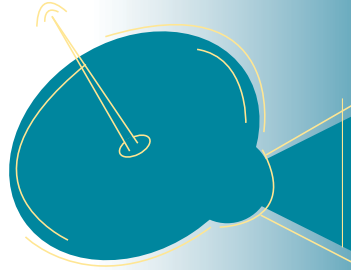
EUS workshop

- \$75**, Lectures only
 \$200, Lectures and hands-on
(includes main course)



Beth Israel Deaconess
Medical Center

Division of Gastroenterology
330 Brookline Avenue, 5T-402
Boston, MA 02215



Boston International Live Endoscopy Course 2009

October 7 – October 9, 2009